

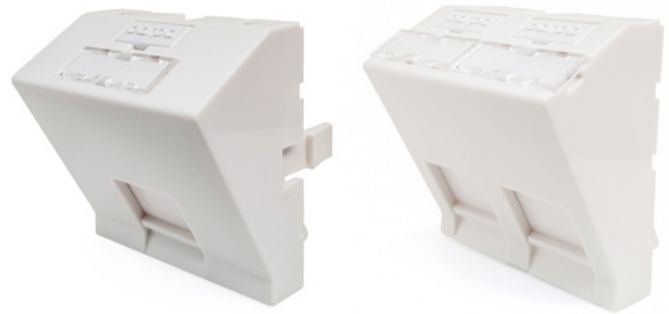


ANGLED FACEPLATE 45X45 mm FOR RJ45 KEYSTONE JACK

DESCRIPTION

The faceplates from barpa are especially design to RJ45 Keystone Jack applications and are compatible with all barpa UTP and STP connectors.

They are easy to install and the angled wayout prevent patch cords from damage and ensure the correct bending radius of it. For all 45x45 mm formats. With shutters for dust protection and labeling windows for faceplate identification.



ROHS

STANDARDS

- IEC 60529; • IEC 60603-7; • IEC 60068-2; • IEC 61340-5-1:2007;
- IEC 60670-1:2005 + A1:2013; • Directive 2011/65/UE (RoHS).

TECHNICAL CHARACTERISTICS

| | |
|-----------------------|---|
| Dimensions | 45 x 45 x 38,6 mm |
| Color | White (RAL 9003) |
| Material | High Quality PC-ABS |
| Number of ports | 1 and 2 |
| Type | Angled |
| Style | 45x45 |
| Applied references | <ul style="list-style-type: none"> • barpa UTP Keystone Jack - 82242110180; 82242110090; 82242111180; 82242111090; 82243110180; 82243110090; 82243111180; 82243111090. • barpa STP Keystone Jack - 82242122180; 82243122180 |
| Label Dimensions (mm) | 20x6 (Template available on our website) |

ENVIRONMENTAL CONDITIONS

| | |
|----------------------------|-----------|
| Operating Temperature (°C) | 0 to 50 |
| Storage Temperature (°C) | -10 to 60 |

LOGISTIC INFORMATION

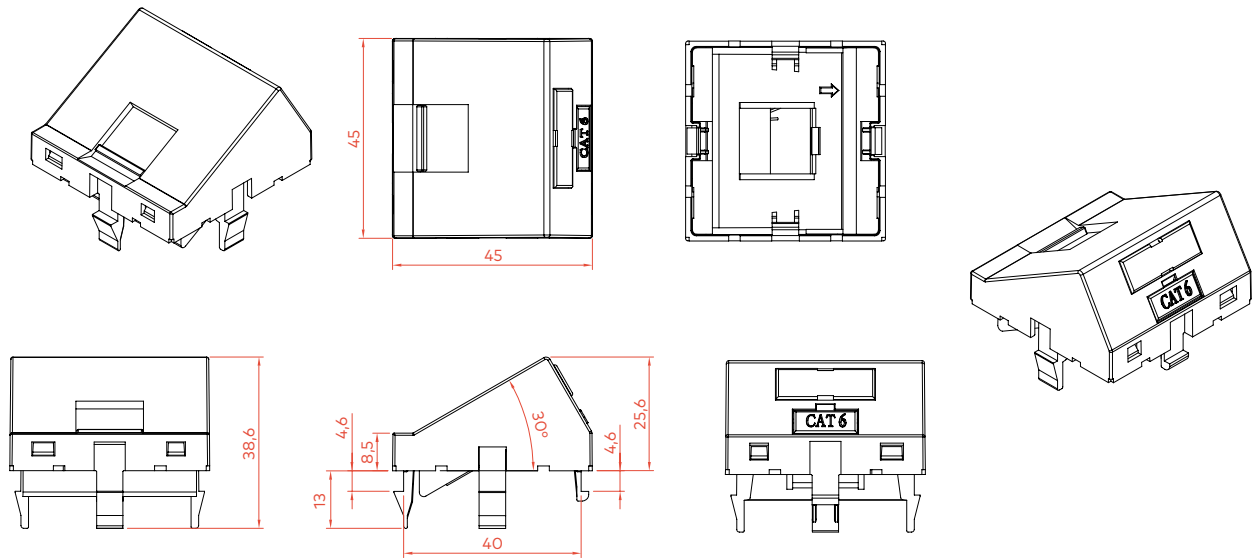
| Code | Description | EAN | Polybag | | | Inner Box | | | Outer Box | | |
|-------------|--|---------------|-------------|-------------|-----------------|-------------|-------------|-----------------|-------------|-------------|-----------------|
| | | | Quant. (un) | Weight (kg) | Dimensions (mm) | Quant. (un) | Weight (kg) | Dimensions (mm) | Quant. (un) | Weight (kg) | Dimensions (mm) |
| 82250120001 | Angled Faceplate 45x45 mm w/ 1 Port for Rj45 keystone Jack White (RAL9003) | 5608445032119 | 1 | 0,01 | 90,0x38,6x132,0 | 15 | 0,30 | 230,0x90,0x90,0 | 240 | 6,00 | 380x240x365 |
| 82250120002 | Angled Faceplate 45x45 mm w/ 2 Port for Rj45 keystone Jack White (RAL9003) | 5608445032126 | 1 | 0,01 | 90,0x38,6x132,0 | 15 | 0,30 | 230,0x90,0x90,0 | 240 | 6,00 | 380x240x365 |

This document is authored and owned by barpa. It is forbidden to reproduce in whole or in part without mentioning its authorship, as well as modification of its content or context. All specifications are subject to change without notice. The pictures/drawings are merely illustrative.

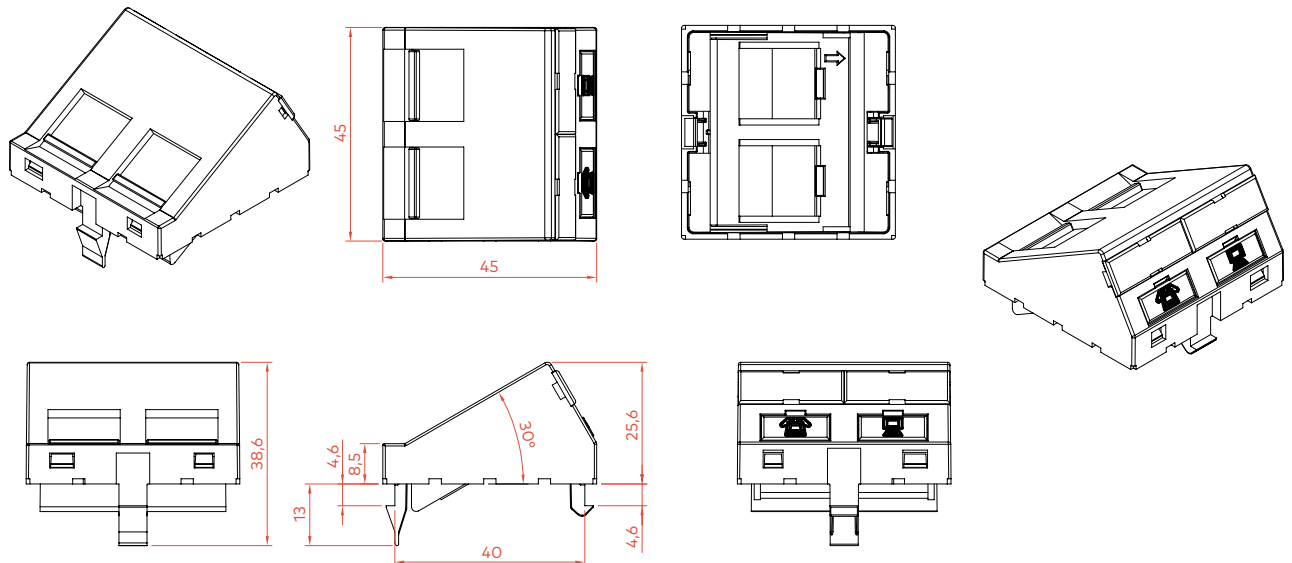
More information: info@barpa.eu or in www.barpa.eu

TECHNICAL DRAWING (mm)

1 PORT



2 PORT





ANGLED FACEPLATE 45X45 mm
FOR RJ45 KEYSTONE JACK

PACKAGING

This images are merely illustratives. We want you to see the importance we attach to the packaging.
We always work with products and materials that are easy to use.

