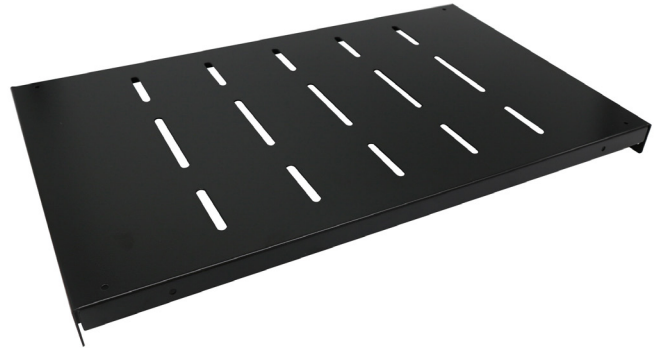


## FIXED SHELF

### DESCRIPTION

barpa Fixed Shelf with side fixing 4 points and it's only suitable for barpa cabinets. It has different purposes depending on your needs.



### FEATURES

Material	SPCC 1.2 Cold Rolled Steel
Width (mm)	485
Static Load Capacity (Kg)	90
Color	Black (RAL9004)

### ORDER INFORMATION

Code	Description	Size (mm)	Unit Weight (kg)	Inner Box		Carton	
				Dimensions (mm)	Quantity (un)	Dimensions (mm)	Quantity (un)
82390141106	Crux 1 450mm	300	1,65	510x55x315	2	535x280x340	10
82390141108	Crux 1 600mm	450	1,2	510x55x465	2	535x280x490	10
82390131107	Cetus and Norma 600mm	350	1,8	510x55x365	2	535x280x390	10
82390131109	Norma 800mm	550	2,7	510x55x565	2	535x280x590	10
82390131111	Norma 1000mm	720	3,25	510x55x735	2	535x280x760	10
82390121109	Cetus 800mm	500	2,7	510x50x520	2	535x255x540	10
82390121111	Cetus 1000mm	700	3,25	510x50x720	2	535x255x740	10
82390121112	Norma and Cetus 1200mm	900	3,75	510x50x920	2	535x255x940	10

### TECHNICAL DRAWING (mm)

