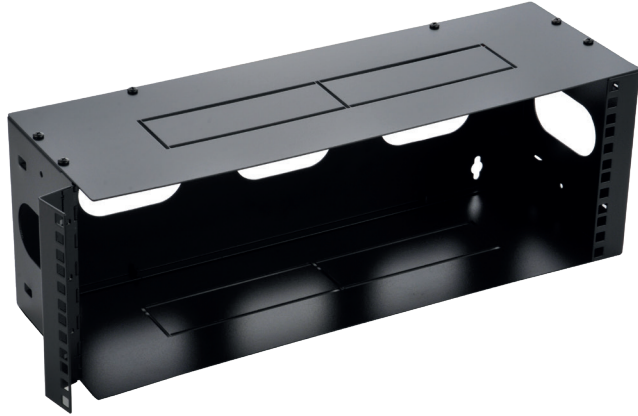


CRUX 2

DESCRIÇÃO

Crux 2 cabinet is the wall mount bracket of the barpa range of cabinets. It's available in a range of heights and depths. The best way to get the most of this cabinet is with barpa accessories, you should get them separately. Perfect for versatile solutions as small networks, allowing to save space.



STANDARDS

• ANSI/EIA RS-310-D; • IEC 60297-2; • DIN 41494 Parte 1 y 7.

FEATURES

19" standard installation

For multiple purposes

Black color

Powder painted steel construction

ORDER INFORMATION

Code	Description	U	Quantity (un)	Width (mm)	Dimensions (mm)		Weight (kg)	
					Pack 1	Pack 1		
82311020600	Crux 2 2U	2			550x120x190	2		
82311030600	Crux 2 3U	3	1		550x170x200	2		
82311040600	Crux 2 4U	4		6" - 152.4mm	550x210x190	2		
82311060000	Cover 6"	-	2		550x110x220	2		
82311041200	Crux 2 4U	4			520x210x330	3		
82311071200	Crux 2 7U	7	1	12" - 304.8mm	520x330x320	5		
82311120000	Cover 12"	-	2		550x110x350	3		