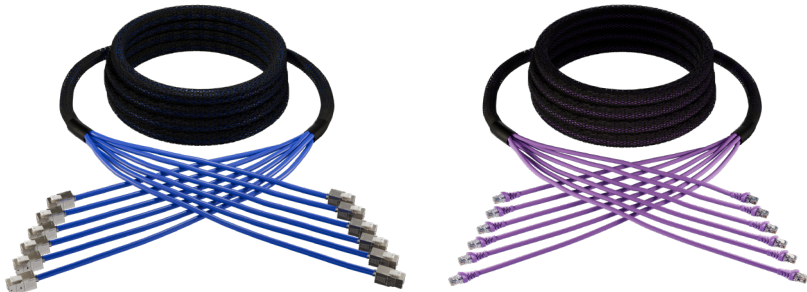




COPPER TRUNK CABLES

DESCRIPTION

barpa’s Copper Trunk Cables are pre-terminated solutions ideal for rack-to-rack mirroring, especially in high-density environments such as data centers. Designed to optimize organization and accelerate the deployment of multiple structured links, they are manufactured and tested at our Internal Production Unit (Higgs), ensuring consistent performance, quality assurance, and full compliance with international standards.



STANDARDS

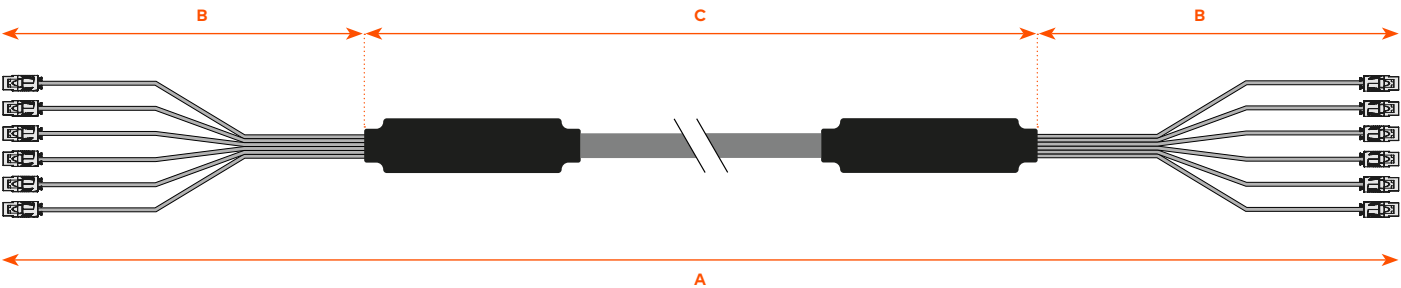
- ISO/IEC 11801 • EN 50173 • ANSI/TIA-568.2-D • EN 50575 (CPR)
- Directive 2011/65/EU (RoHS)

FEATURES

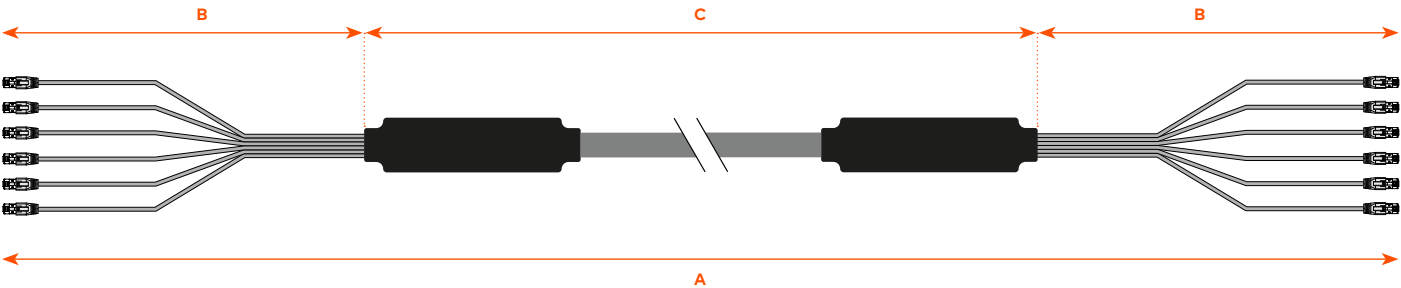
100% tested for electrical performance (Permanent Link / Channel / MPTL)
Available in shielded (STP) or unshielded (UTP) options
CPR-rated cables (Dca, Cca, B2ca)
Fully compliant with performance requirements of Cat6, Cat6A, and Cat8 categories
Supports PoE, PoE+ and 4PPoE
Different Lengths and Bundles Available: performance guaranteed up to 90 m in accordance with EN 50173, ISO/IEC 11801-1 and ANSI/TIA-568.2-D
Supplied with Fluke Test Report to ensure quality and performance
Each cable is uniquely labeled with a QR Code for full traceability
Country of Origin: Portugal

COPPER TRUNK CABLES

KEYSTONE JACK + KEYSTONE JACK TRUNK CABLE



MODULAR PLUG + MODULAR PLUG TRUNK CABLE



A - Total length	Measured from the tip of one connector to the tip of the other. Tolerance of $\pm 2\%$.
B - Fanout length	1 meter (standard), not staggered. Custom lengths and staggered configurations available upon request.
C - Cable length	Defined by the customer

CHART FOR ORDER INFORMATION



Keystone Jack + Keystone Jack Trunk Cable

Solution Type	Cable Category	CPR Class	Connectors	Bundles
Shielded	Cat.8.1 S/FTP LSZH 22AWG	B2ca - s1a,d1,a1	Cat.8 STP Keystone Jack	6 or 12 cables Other configurations available upon request
	Cat.7A S/FTP LSZH 23 AWG *	Cca - s1a,d1,a1	Cat.6A STP Keystone Jack	
	Cat.7 S/FTP LSZH 23 AWG *	Cca - s1a, d1,a1	Cat.6A STP Keystone Jack	
	Cat.6A U/FTP LSZH 23 AWG	Dca - s1, d2, a1	Cat.6A STP Keystone Jack	
		Cca - s1a,d1,a1		
	Cat.6A S/FTP LSZH 23 AWG	Cca - s1, d1, a1	Cat.6A STP Keystone Jack	
		B2ca - s1a, d1, a1		
Cat.6 U/FTP LSZH 23 AWG	Dca - s1, d2, a1	Cat.6 STP Keystone Jack		
Unshielded	Cat.6A U/UTP Extreme LSZH 23 AWG	B2ca - s1a, d0, a1	Cat.6A UTP Keystone Jack	6 or 12 cables
	Cat.6 U/UTP LSZH 23 AWG	Dca - s2, d2, a1	Cat.6 UTP Keystone Jack	Other configurations available upon request
		Cca - s1a, d1, a1		

Available lengths - From 2 m up to custom lengths.

Additional Notes - Tested in Permanent Link configuration (EN 50173 / ISO/IEC 11801 / TIA-568.2-D).

* Cat.7/7A cables tested to Cat.6A performance standards.

CHART FOR ORDER INFORMATION



Modular Plug + Modular Plug Trunk Cable

Solution Type	Cable Category	CPR Class	Connectors	Bundles
Shielded	Cat.6A U/FTP LSZH 23 AWG	Dca - s1, d2, a1 Cca - s1a,d1,a1	Cat.6A STP Modular Plug	6 or 12 cables
	Cat.6A S/FTP LSZH 23 AWG	Cca - s1, d1, a1 B2ca - s1a, d1, a1	Cat.6A STP Modular Plug	Other configurations available upon request
	Cat.6 U/FTP LSZH 23 AWG	Dca - s1, d2, a1	Cat.6A STP Modular Plug	
Unshielded	Cat.6A U/UTP Extreme LSZH 23 AWG	B2ca - s1a, d0, a1	Cat.6A UTP Modular Plug	6 or 12 cables
	Cat.6 U/UTP LSZH 23 AWG	Dca - s2, d2, a1 Cca - s1a, d1, a1	Cat.6A UTP Modular Plug	Other configurations available upon request

Available lengths - From 2 m up to custom lengths.

Boot color customization available - Choose from Grey, Black, White, Purple, Orange, Green, Red, Yellow or Blue.

Additional Notes - Tested in Channel configuration (EN 50173 / ISO/IEC 11801 / TIA-568.2-D).

For assistance customizing your solution, please contact our team at info@barpa.eu

TECHNICAL INFORMATION & CERTIFICATIONS

For detailed technical specifications, applicable standards, and available certifications of the cables and connectors used in this solution, please refer to each product's individual page at: www.barpa.eu



As part of our goal to achieve quality excellence, our barpa System Warranty can give you 25 years products and solution assurance of compliance with the industry performance standard comparing with the class installed. This warranty applies to network infrastructure installations that was made by an approved barpa partner using an barpa solution (end-to-end). For more informations go to our website.