



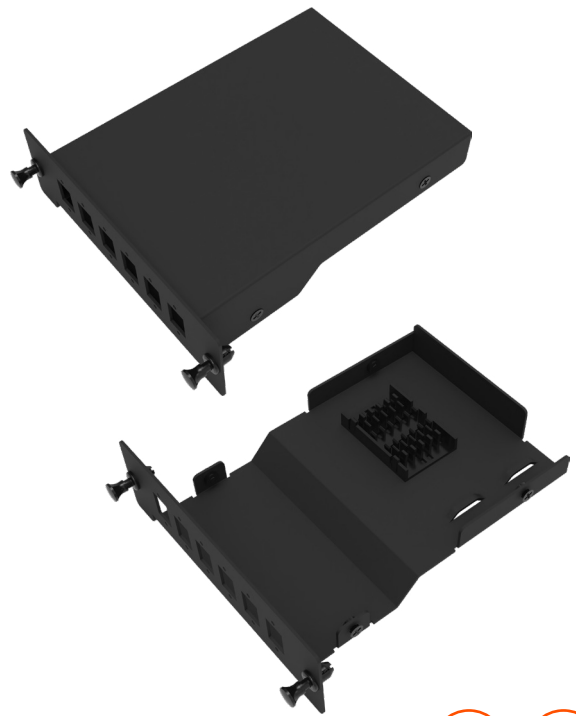
## FRONT PLATE WITH SPLICE TRAY FOR 3 TECH PANEL

### DESCRIPTION

barpa's Front Plate with Splice Tray for 3 Tech Panel, provides an efficient solution for fiber optic management, supporting up to 6 SC Simplex or LC Duplex adapters. With a design that ensures a practical and organized interface, its splice tray offers optimized protection and fiber organization, ensuring maximum performance of the system.

### APPLICABLE STANDARDS

• ISO/IEC 11801 • EN 50173-9



### SPECIFICATIONS

Number of ports	6
Type of adapters	SC Simplex LC Duplex
Number of Splices per Cassette	SC Simplex 6 LC Duplex 12
Material	SPCC Steel
Surface	Powder Coating
Color	Black (RAL 9005)
Dimensions (mm)	128x140x40
Weight (kg)	0,38

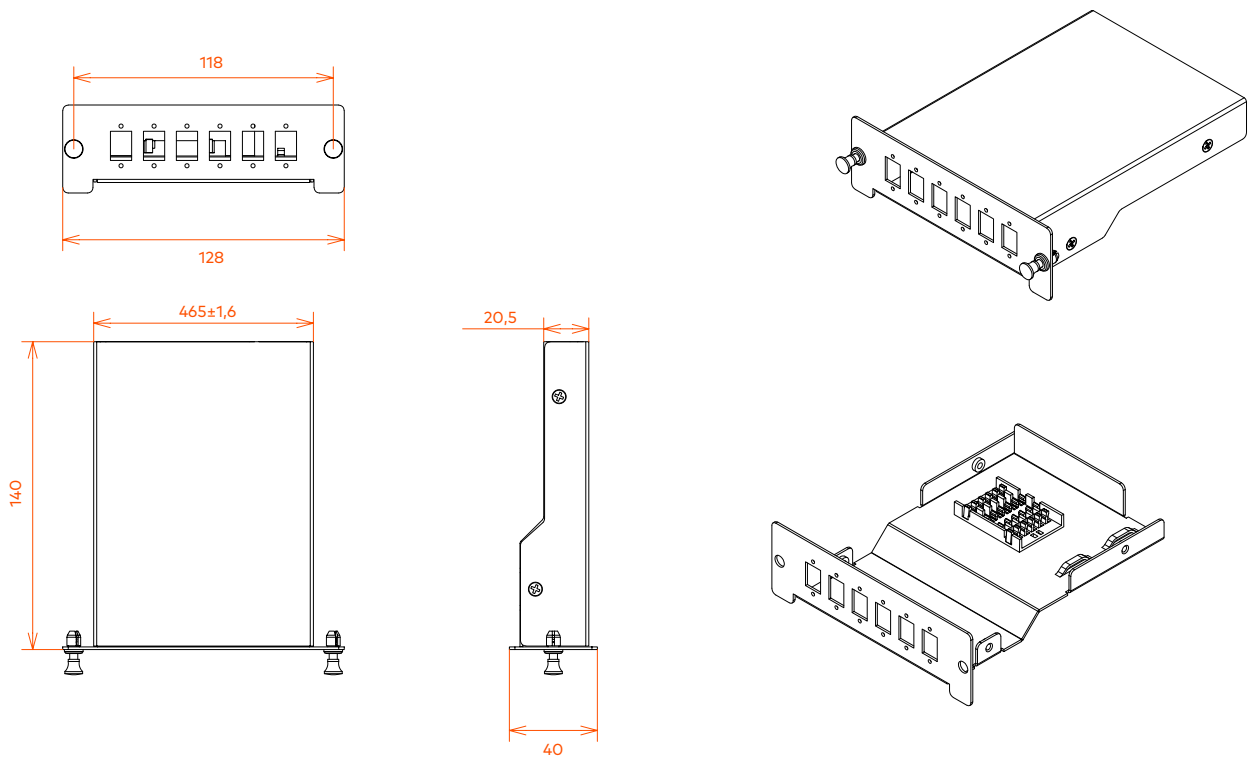
### INCLUDED ACESSORIES

12x Fiber Optic Sleeves - 2.8mm - 40mm
2x Cable Ties

### LOGISTICS INFORMATION

Code	Inner Box		Carton	
	Dimensions (mm)	Quantity (un)	Dimensions (mm)	Quantity (un)
82251100002	165x135x47	1	370x320x170	32

### TECHNICAL DRAWING (mm)





## FRONT PLATE WITH SPLICE TRAY FOR 3 TECH PANEL

### PACKAGING

This images are merely illustratives. We want you to see the importance we attach to the packaging.  
We always work with products and materials that are easy to use.



As part of our goal to achieve quality excellence, our barpa System Warranty can give you 25 years products and solution assurance of compliance with the industry performance standard comparing with the class installed. This warranty applies to network infrastructure installations that was made by an approved barpa partner using an barpa solution (end-to-end). For more informations go to our website.

This document is authored and owned by barpa . It is forbidden to reproduce in whole or in part without mentioning its authorship, as well as modification of its content or context. All specifications are subject to change without notice.  
The pictures/drawings are merely illustrative.

More information: [info@barpa.eu](mailto:info@barpa.eu) or in [www.barpa.eu](http://www.barpa.eu)

datasheet n° b181\_0 | date: 10/24

approved by: Ana Barbosa