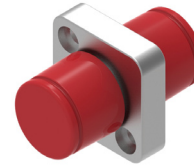


DESCRIPTION

High reliability and precision alignment. Increase panel density, save space. Easy to use. Low Insertion loss and Return loss. Good repeatability, changeability and temperature stabilization. Include dust protections caps.

APPLICABLE STANDARDS

- ISO/IEC 11801 • EN 50173-1 • IEC 61754-1 • IEC 61753-1
- IEC 61300 • RoHS



OS2 FC SIMPLEX



OS2 ST SIMPLEX



OM2 ST SIMPLEX



OPERATING PERFORMANCE

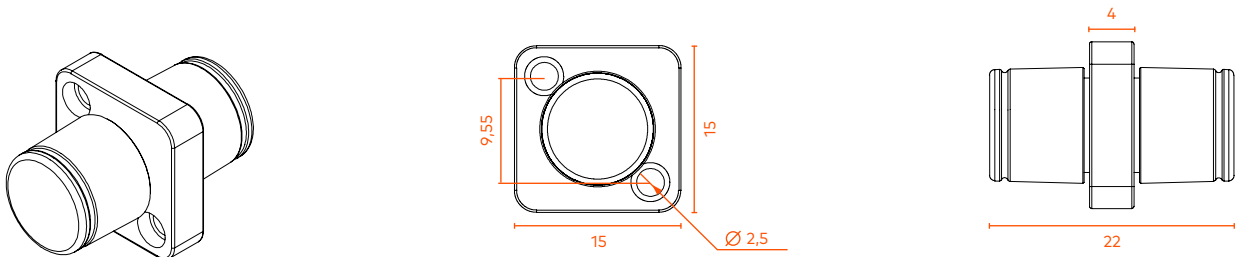
	Singlemode		Multimode
	UPC	APC	UPC
Insertion Loss (dB)	< 0,2	< 0,2	< 0,2
Durability (500 Mating) (dB)	< 0,2	< 0,2	< 0,2
Operation Temperature (°C)	-40 to +85	-40 to +85	-40 to +85
Retention Force (N)	200-600	200-600	200-600
Housing Material	Metal	Metal	Metal
Mounting Style	Flange Mount	D Mount	Flange Mount
Sleeve Alignment Material	Ceramic (Grade A)	Ceramic (Grade A)	Ceramic (Grade A)
Colour	Yellow	Green	Red

ORDER INFORMATION

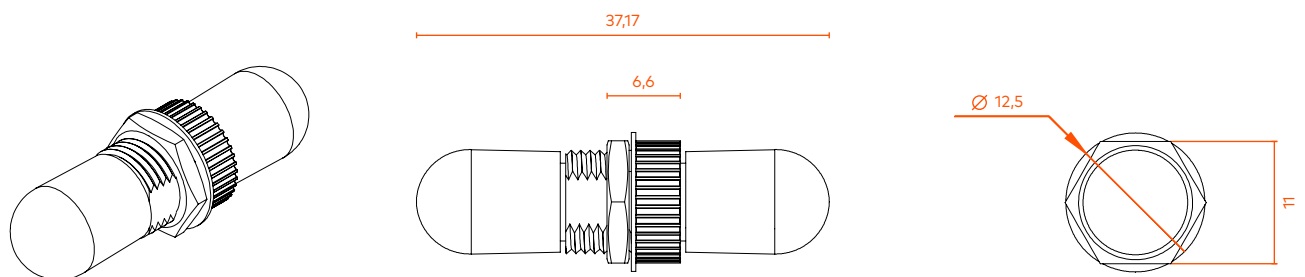
Code	Description	Conector	Category	Typology	Color	Quantity (un)
81411031021	Adapter OS2 ST Simplex	ST	OS2	Simplex	Silver/Yellow Cap	12
81411033021	Adapter OM2 ST Simplex	ST	OM2	Simplex	Silver/Red Cap	12
81411061021	Adapter OS2 FC Simplex	FC	OS2	Simplex	Silver/Red Cap	12

TECHNICAL DRAWING (mm)

FC SIMPLEX



ST SIMPLEX



PACKAGING

This images are merely illustratives. We want you to see the importance we attach to the packaging.
We always work with products and materials that are easy to use.



As part of our goal to achieve quality excellence, our barpa System Warranty can give you 25 years products and solution assurance of compliance with the industry performance standard comparing with the class installed. This warranty applies to network infrastructure installations that was made by an approved barpa partner using an barpa solution (end-to-end). For more informations go to our website.