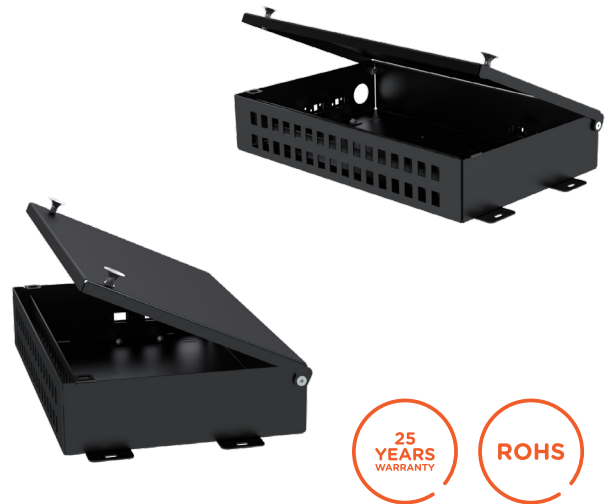


## WALL MOUNTED SPLITTER DISTRIBUTION BOX

### DESCRIPTION

The barpa Wall Mounted Splitter Distribution box is an box to hold PLC splitters. Steel construction with Black Powder Coating. Specially designed for GPON barpa solution.

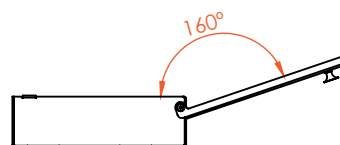
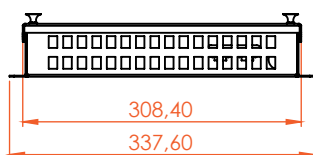
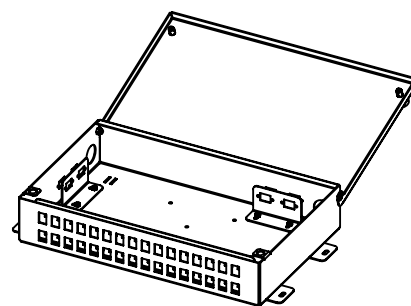
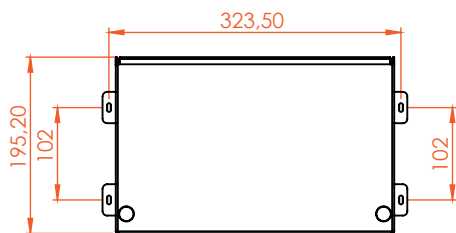
You can purchase this single product or you can customize per your needs (with splitters and adapters).



### FEATURES

Adapter Type	SC Simplex
Thickness (mm)	1,5
Color	Black (RAL9005)
Dimmension (mm)	338x196x45
Weight (kg)	2,1
Number of Way Out	32
Number of Way In	2

### TECHNICAL DRAWING (mm)



## WALL MOUNTED SPLITTER DISTRIBUTION BOX

### ORDER INFORMATION

Code	Connector	Quantity inner box (un)	Measurement inner box (cm)	EAN Code
81602050320	SC Simplex	1	35x22x10	5608445033635

### CUSTOMIZATION - HIGGS BY BARPA

# TAILOR MADE

You can order this customized, what you need to consider:

Choose the type of splitter you want

1x16

1x32

Choose the number of splitters you want

For 1x16 - Maximum of splitters 2

For 1x32 - Maximum of splitters 1

Choose the type of splitter you want

These are just two examples. Merely illustrative images.



EU

This product is developed and produced in Europe.

25  
YEARS  
WARRANTY

As part of our goal to achieve quality excellence, our barpa System Warranty can give you 25 years products and solution assurance of compliance with the industry performance standard comparing with the class installed. This warranty applies to network infrastructure installations that was made by an approved barpa partner using an barpa solution (end-to-end). For more informations go to our website.